

CRAWFORD

Lachlan façade



Cooper façade



Flinders façade



Barrington façade



Manning façade



Nepean façade

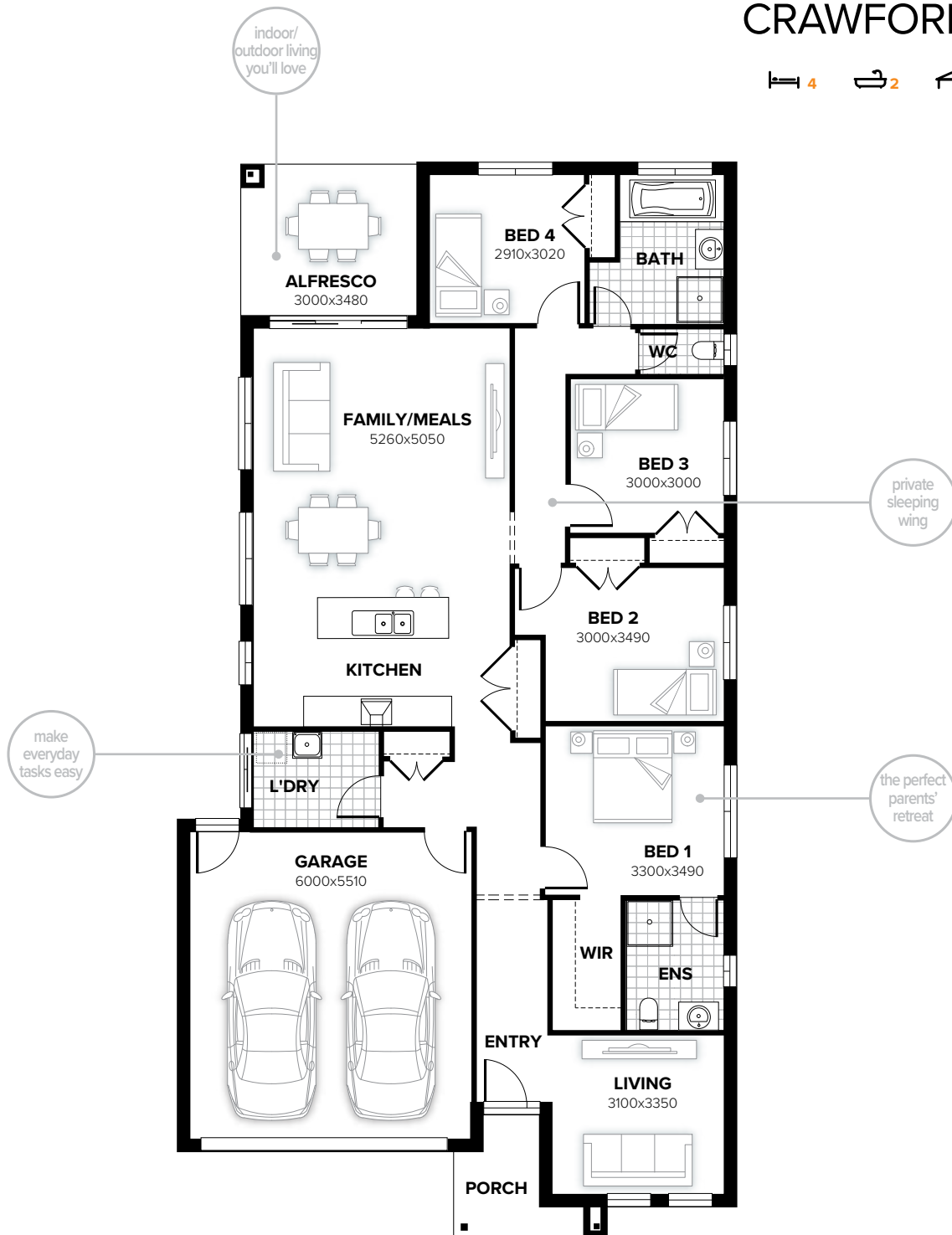


Bowman façade



CRAWFORD 203

4 2 1 2



FLOORPLAN OPTIONS

Want to put a personal touch on your home? Speak to your New Home Consultant about the exciting range of ready-to-go design options for this floorplan.

Popular design options include:

- Kitchen options
- Laundry options
- Relocate living room
- Storage and workshop options
- Triple car garage option
- Butler's pantry option

home width	10.91m
home length	20.99m

residence	152.17sqm	16.38sq
alfresco	10.44sqm	1.12sq
porch	4.11sqm	0.44sq
garage	36.28sqm	3.91sq
total	203.00sqm	21.85sq

Listed details based on Lachlan façade floorplan (illustrated)

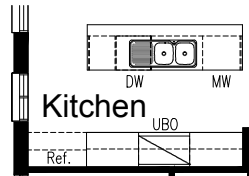
Call 13 BURBANK Visit burbank.com.au

Burbank 
#noplacelikehome

*Copyright conditions. All photos and illustrations are representative only. Floor plans and specifications may be varied by Burbank without notice, the dimensions are diagrammatic only and a Building Contract with final drawings will display correct dimensions and detail. All designs are the property of Burbank and must not be used, reproduced, copied or varied, wholly or in part without written permission from an authorised Burbank representative. Copyright Burbank Australia (NSW) Pty Ltd. ABN 88 610 822 870. NSW BL 295627C. ACT BL 2016566.

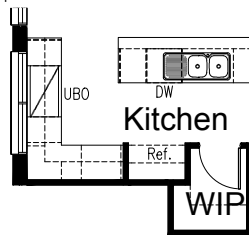
OPTION K1

Provide Kitchen upgrade with 2no. 900mm base cupboards, 1no. 900mm under bench oven with 900mm retractable rangehood above, 2no. 900mm overhead cupboards, 1no. laminated open shelf above refrigerator space, 1no. 450mm drawers, 1no. laminated DW provision, 1no. 900mm base cupboard, 1no. laminated MW provision with pot drawer below and additional bench top and tiled splash back to suit.



OPTION K2

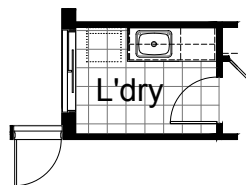
Provide Kitchen & WIP upgrade by providing plaster lined WIP with 4no. 450mm deep shelves and 1no. 720mm flush panel hinged door, 2no. 450mm base cupboards, 1no. 700mm base cupboard, 1no. 300mm base cupboard, 1no. 900mm under bench oven with 900mm retractable rangehood above, 2no. 450mm overhead cupboards, 1no. 800mm base blind cupboard, 1no. 600mm corner overhead cupboard, 1no. 700mm overhead cupboard, 1no. 350mm overhead cupboard, 1no. laminated open shelf above refrigerator space, 1no. laminated DW provision, 1no. 900mm base cupboard and 1no. 450mm drawers with additional bench top and tiled splash back to suit. Provide 514mm x 1810mm fixed window above bench top.



OPTION LD1

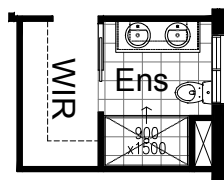
Provide Laundry upgrade with laminated insert trough, 1no. 900mm base cupboard, 1no. 600mm base cupboard, 1no. 900mm overhead cupboard, 1no. 600mm overhead cupboard and additional tiled splash back and bench top to suit.

NOTE - Cannot be chosen with option K3



OPTION ENS1

Provide Ensuite Option with additional 1no. 1500mm x 900mm tiled shower base in lieu of standard, 1no. 1482mm wide vanity unit with 2no. basins in lieu of standard. remove swinging door and relocate entry to ensuite to WIR with 300mm plaster bulkhead. Provide 1027mm x 1210mm aluminium sliding window in lieu of standard.



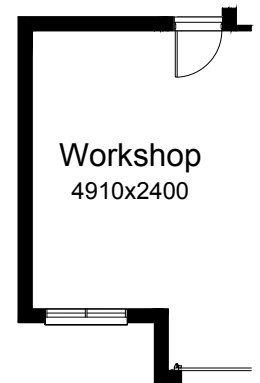
OPTION G1

Provide extension to Garage to create additional Storage area. Increases area by 776m². Increases width by 1440mm.



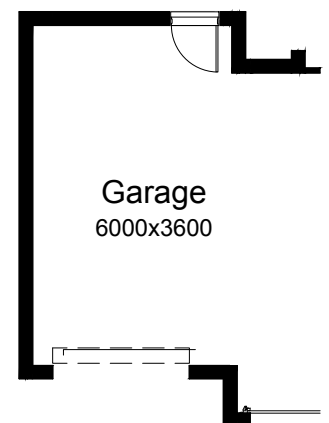
OPTION G2

Provide extension to Garage to create Workshop area including additional window to suit. Increases length by 2400mm. Increases area by 12.93m².



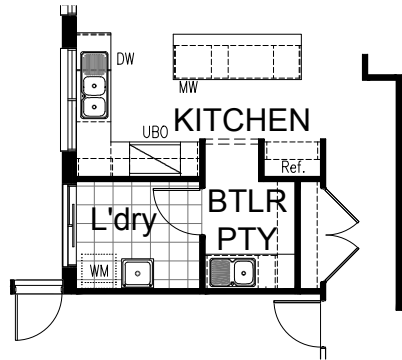
OPTION G3

Provide triple car Garage including additional roller door to front, relocate external access door to rear of triple garage. Increases area by 23.69m². Increases width by 3600mm.



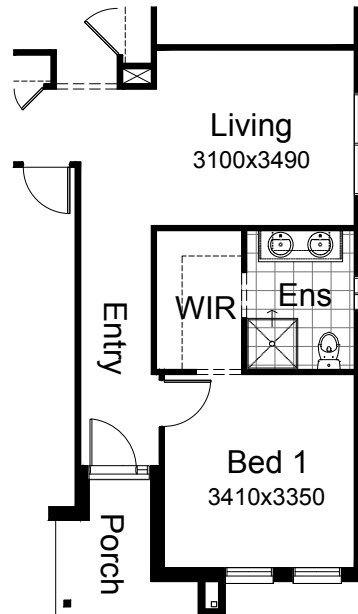
OPTION K3

Provide Kitchen and walk through butler's pantry / laundry Option by increasing Laundry width by 310mm, relocate linen cupboard and provide 4/300mm shelving & 2no. 820mm flush panel hinged doors, reduce L'dry passage by 200mm and provide site build plaster lined butler's pantry with with 3no. 300mm deep shelves and 1no. 720mm flush panel hinged door. Decrease Kitchen opening/Bulkhead width by 190mm to 900mm in lieu of standard. Provide 2no. 300mm base cupboards, 1no. 900mm under bench oven with 1no. 900mm wide retractable range hood, 1no. 800mm blind base cupboard with 1no. 350mm door, 1no. 900mm base cupboard, 2no. 300mm overhead cupboards, 1no. 600mm overhead shelf above refrigerator cupboard, 1no. laminated open shelf above refrigerator space, 1no. 450mm drawers, 1no. 800mm base cupboard, 1no. 300mm base cupboard, 1no. laminated DW provision, 1no. 1200mm x 1810mm aluminum sliding window with additional tiled splash back and bench top to suit. Provide 1no. 300mm base cupboard, 1no. 900mm base cupboard, 1800mm high open adjustable shelves, 1no. single sink with drainer and tiled splashback and bench top to suit in butler's ptly.



OPTION IP1

Provide Bed 1, WIR, Ensuite & Living reconfiguration with 900mm x 900mm tiled shower base, 1no. 1482mm wide vanity unit with 2no. basins in lieu of standard. Remove swinging door and relocate entry to Ensuite from WIR with 300mm plaster bulkhead. Relocate bulkhead to entry and place inline with linen cupboard.



OPTION LD2

Provide Laundry upgrade with laminated insert trough, 1no. 900mm base cupboard, 1no. 450mm base cupboard, 1no. 900mm overhead cupboard, 1no. 450mm overhead cupboard and additional tiled splash back and bench top to suit.

NOTE - Can only be used if option K3 is selected.

